

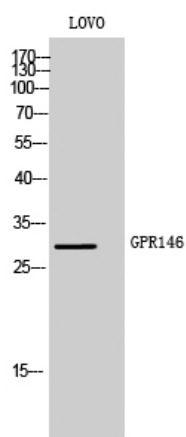


# GPR146 Polyclonal Antibody

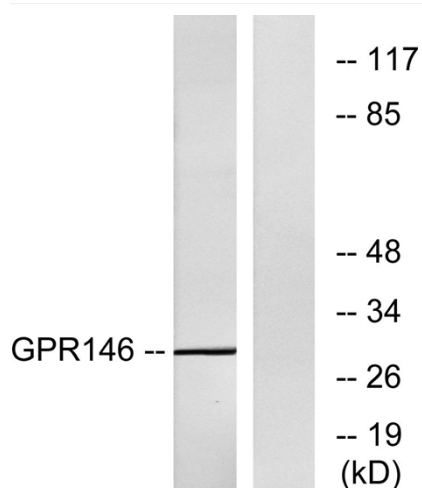
<b>Catalog No</b>	YP-Ab-13304
<b>Isotype</b>	IgG
<b>Reactivity</b>	Human;Rat;Mouse;
<b>Applications</b>	WB;IF;ELISA
<b>Gene Name</b>	GPR146
<b>Protein Name</b>	Probable G-protein coupled receptor 146
<b>Immunogen</b>	The antiserum was produced against synthesized peptide derived from human GPR146. AA range:191-240
<b>Specificity</b>	GPR146 Polyclonal Antibody detects endogenous levels of GPR146 protein.
<b>Formulation</b>	Liquid in PBS containing 50% glycerol, 0.5% BSA and 0.02% sodium azide.
<b>Source</b>	Polyclonal, Rabbit,IgG
<b>Purification</b>	The antibody was affinity-purified from rabbit antiserum by affinity-chromatography using epitope-specific immunogen.
<b>Dilution</b>	Western Blot: 1/500 - 1/2000. Immunofluorescence: 1/200 - 1/1000. ELISA: 1/5000. Not yet tested in other applications.
<b>Concentration</b>	1 mg/ml
<b>Purity</b>	≥90%
<b>Storage Stability</b>	-20°C/1 year
<b>Synonyms</b>	GPR146; PGR8; Probable G-protein coupled receptor 146; G-protein coupled receptor PGR8
<b>Observed Band</b>	30kD
<b>Cell Pathway</b>	Cell membrane; Multi-pass membrane protein.
<b>Tissue Specificity</b>	Kidney,Lung,
<b>Function</b>	function:Orphan receptor.,similarity:Belongs to the G-protein coupled receptor 1 family.,
<b>Background</b>	function:Orphan receptor.,similarity:Belongs to the G-protein coupled receptor 1 family.,
<b>matters needing attention</b>	Avoid repeated freezing and thawing!
<b>Usage suggestions</b>	This product can be used in immunological reaction related experiments. For more information, please consult technical personnel.



## Products Images



Western Blot analysis of LOVO cells using GPR146 Polyclonal Antibody



Western blot analysis of lysates from LOVO cells, using GPR146 Antibody. The lane on the right is blocked with the synthesized peptide.